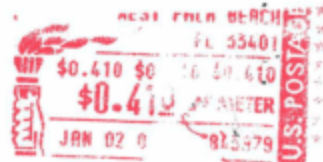




ATTERBURY GOLDBERGER & WEISS, P.A.

One Clearlake Centre, Suite 1400
250 Australian Avenue South West Palm Beach, FL 33401

2008 DEC 3 AM 12:29



Lanna Belohlavek, Esquire
State Attorney's Office
401 North Dixie Highway
West Palm Beach, Florida 33401

33401+4296



09/12/2019

Page 51

Agency to Agency Request: 19-411

CONFIDENTIAL

SDNY_GM_00330096

EFTA_00202822

EFTA02728744